

A.

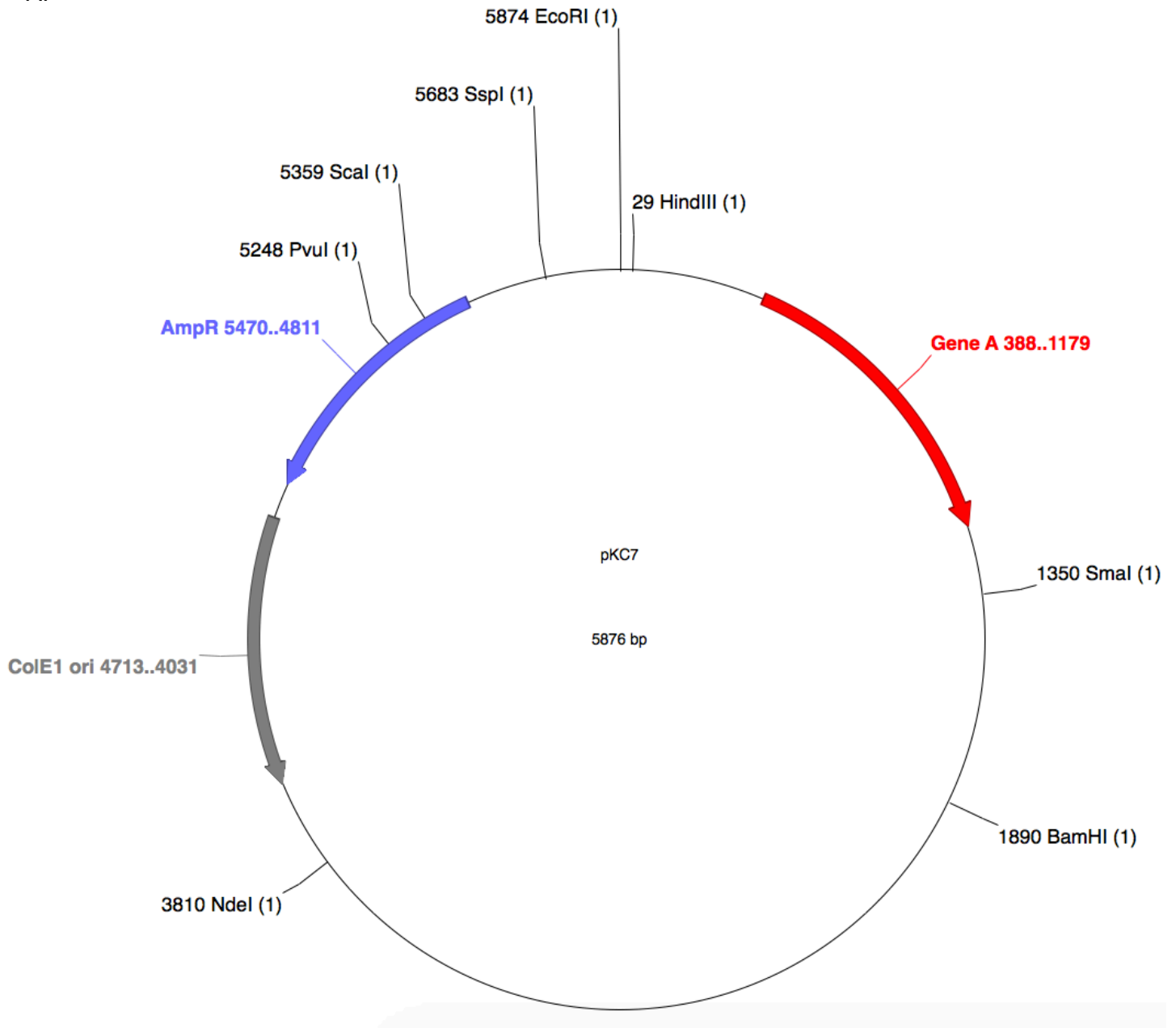


Figure 1. Plasmid map for pKC7. The cut sites for several restriction enzyme are indicated on the plasmid; the number in brackets after the enzyme name indicates the number of times that enzyme cuts pKC7. Direction of coding for Gene A and the ampicillin resistance gene (β -lactamase) are indicated with red and purple coloured arrows. The position and direction of the ColE1 origin of replication is indicated with a grey arrow. Map generated using ApE.

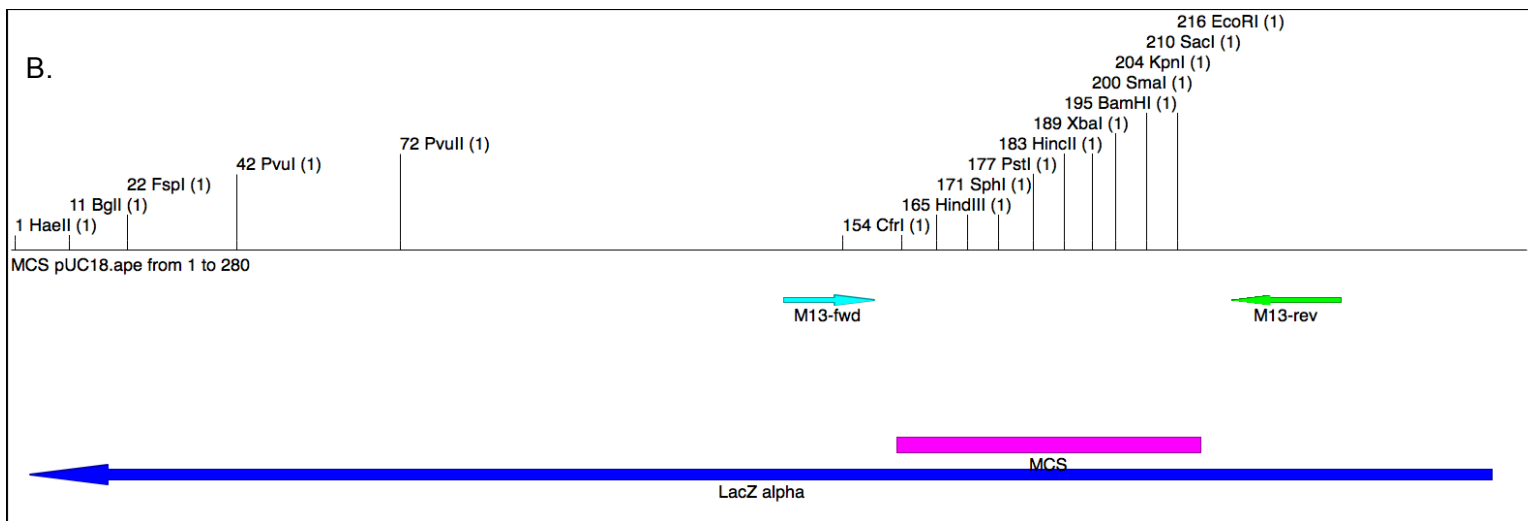
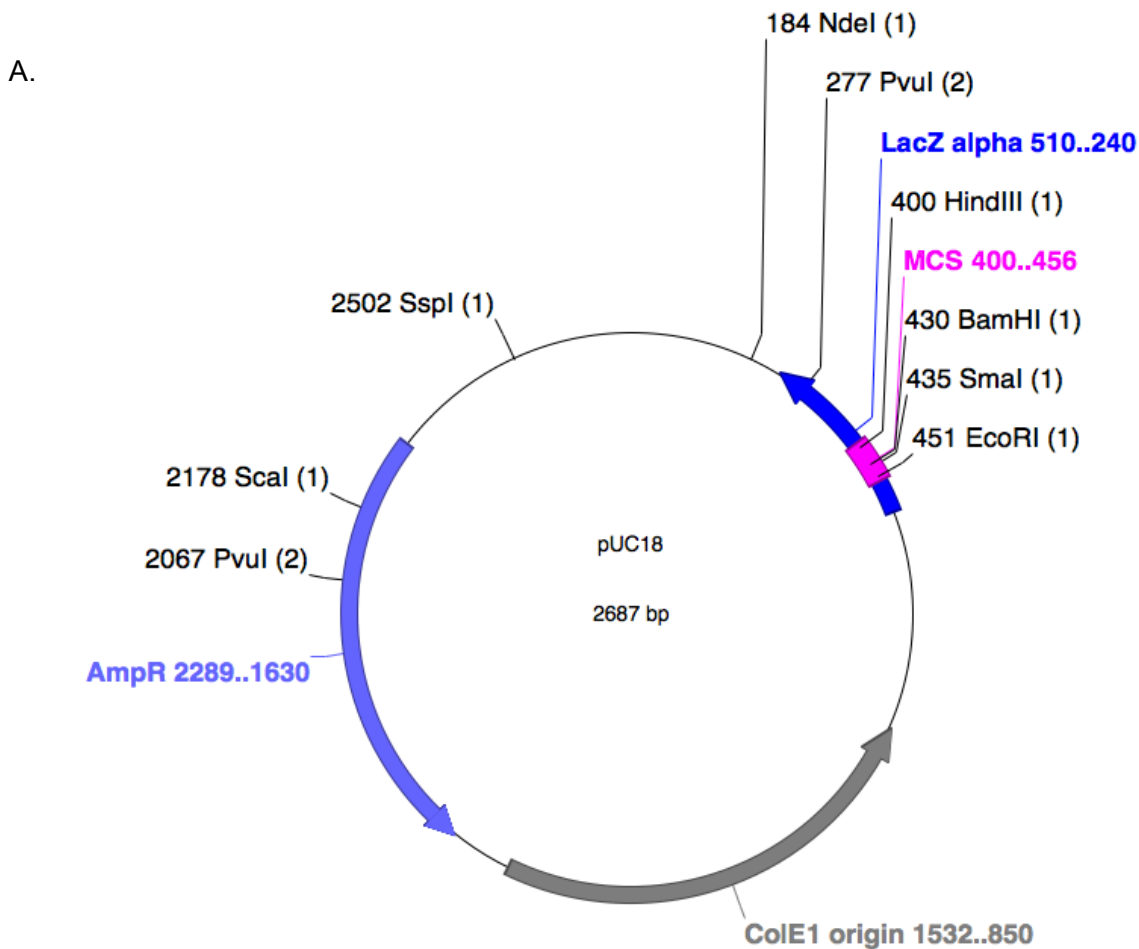


Figure 2. Plasmid maps for pUC18. pUC19 is identical except that the MCS is flipped

A. Full plasmid map. The cut sites for some restriction enzyme are indicated on the plasmid; the number in brackets after the enzyme name indicates the number of times that enzyme cuts pUC18. The position and coding direction of the *LacZ* α fragment and the ampicillin resistance gene (β -lactamase) are indicated with blue and purple coloured arrows. The position and direction of the modified ColE1 origin of replication is indicated with a grey arrow.

B. Enlarged linear map of the *LacZ* α fragment containing the MCS (Multiple Cloning Site). Additional enzyme cut sites are indicated on this map. The M13-fwd and M13-rev primer binding sites for PCR amplification and sequencing of inserts are indicated.

Maps generated using ApE.