

A.

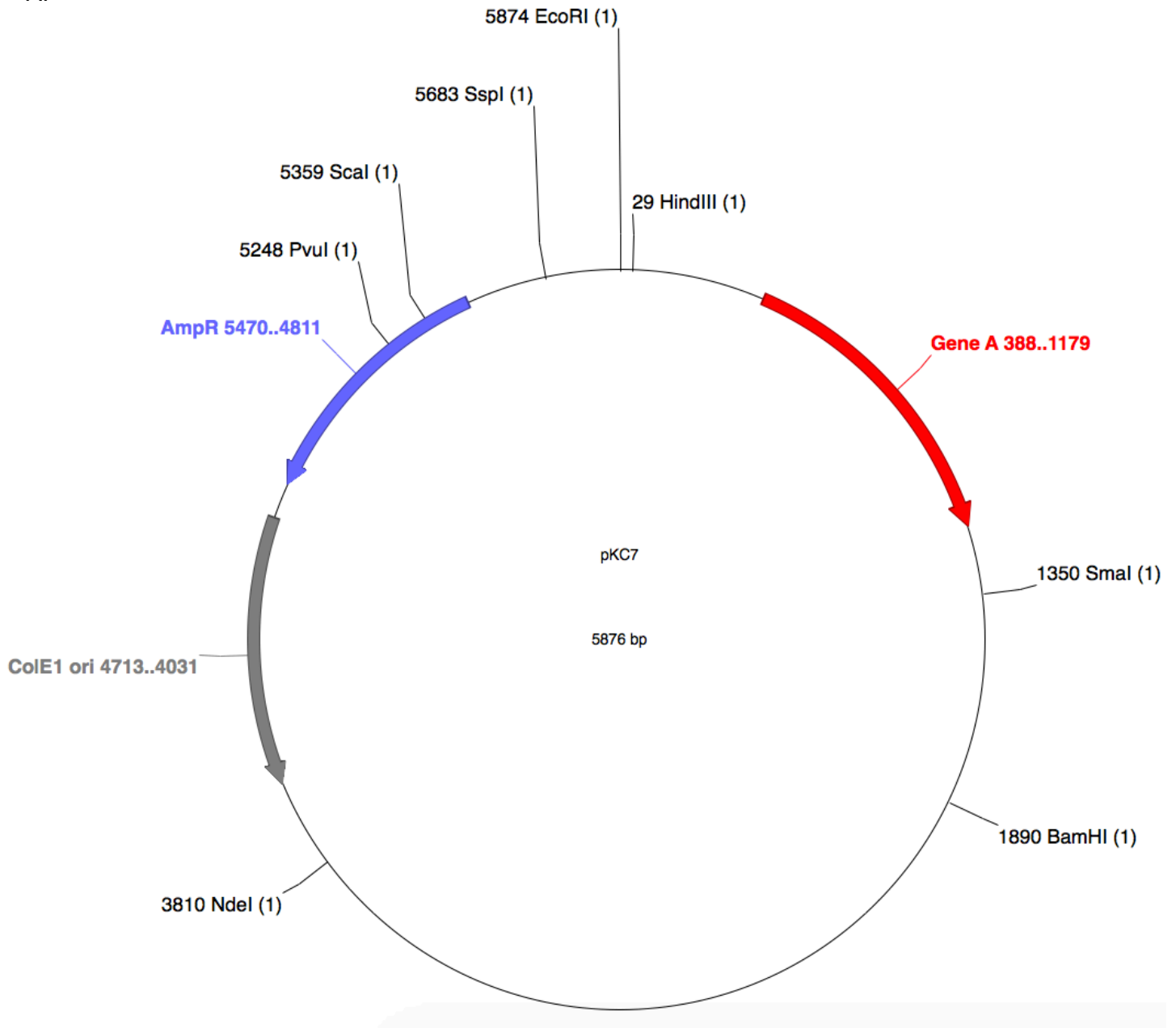


Figure 1. Plasmid map for pKC7. The cut sites for several restriction enzyme are indicated on the plasmid; the number in brackets after the enzyme name indicates the number of times that enzyme cuts pKC7. Direction of coding for Gene A and the ampicillin resistance gene (β -lactamase) are indicated with red and purple coloured arrows. The position and direction of the ColE1 origin of replication is indicated with a grey arrow. Map generated using ApE.

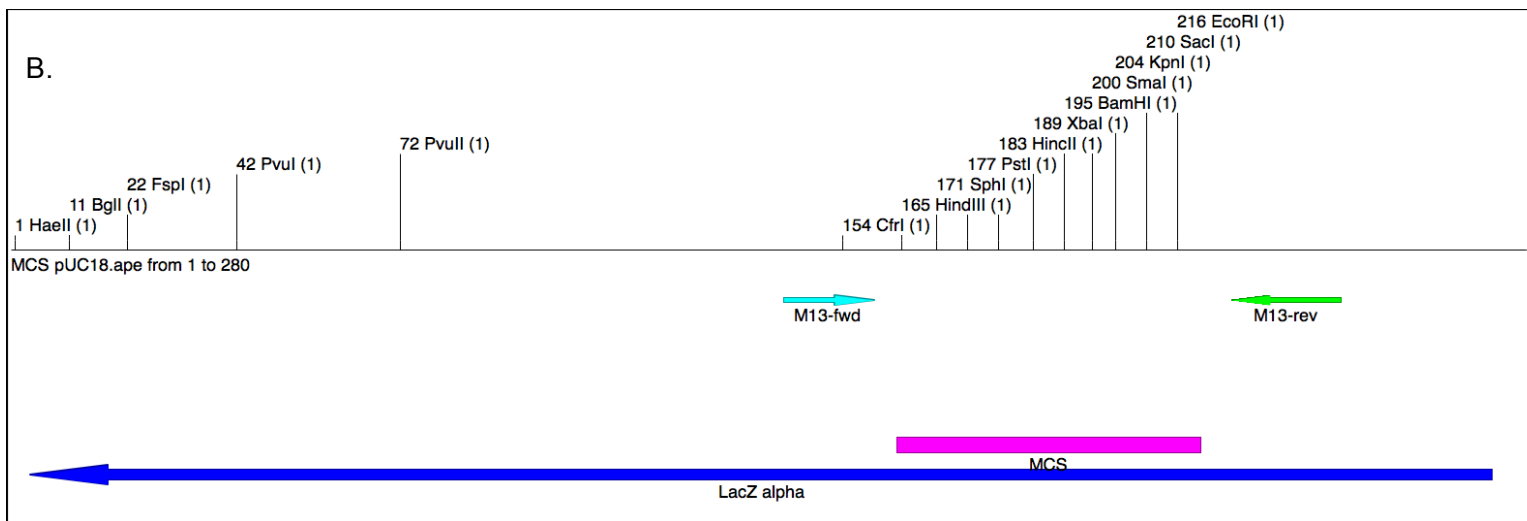
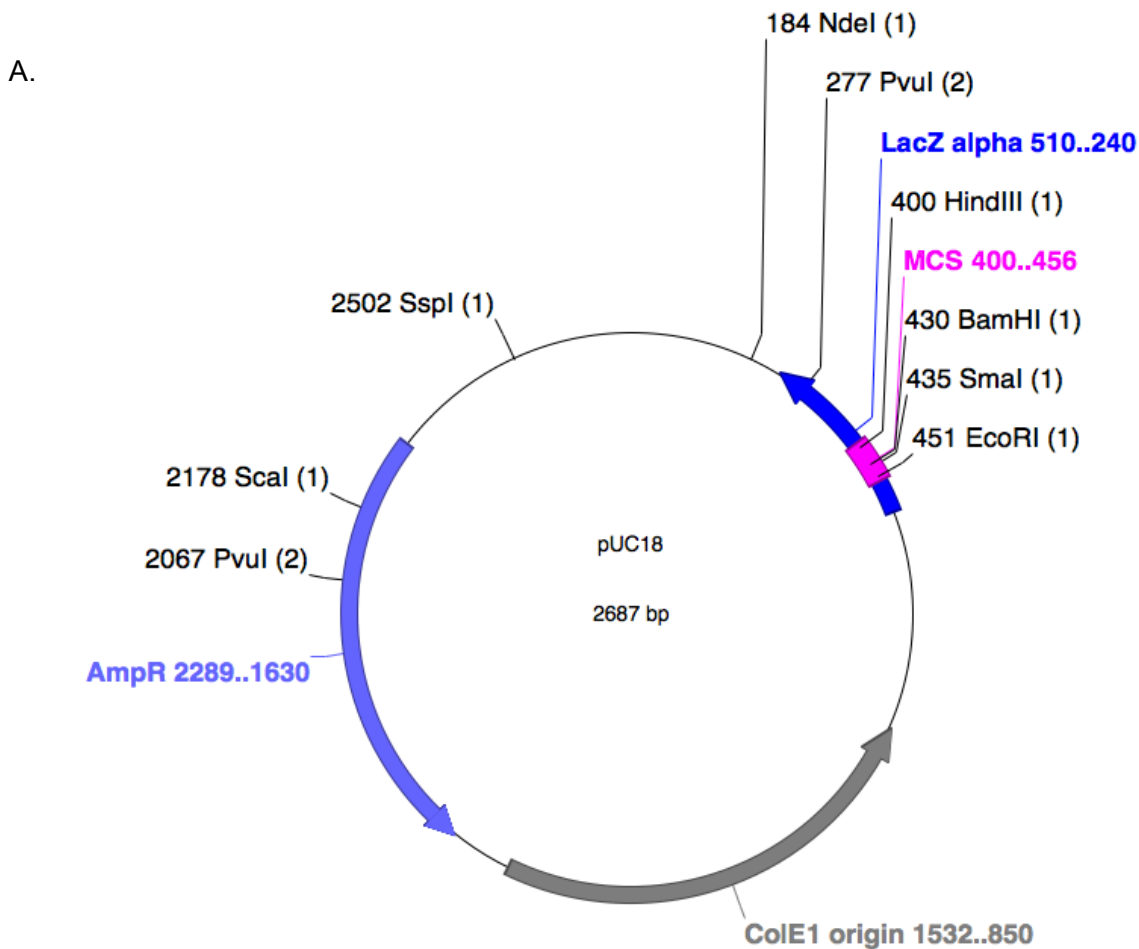


Figure 2. Plasmid maps for pUC18.

A. Full plasmid map. The cut sites for some restriction enzyme are indicated on the plasmid; the number in brackets after the enzyme name indicates the number of times that enzyme cuts pUC18. The position and coding direction of the *LacZ* α fragment and the ampicillin resistance gene (β -lactamase) are indicated with blue and purple coloured arrows. The position and direction of the modified ColE1 origin of replication is indicated with a grey arrow.

B. Enlarged linear map of the *LacZ* α fragment containing the MCS (Multiple Cloning Site). Additional enzyme cut sites are indicated on this map. The M13-fwd and M13-rev primer binding sites for PCR amplification and sequencing of inserts are indicated.

Maps generated using ApE.